

Proven,  
Tested,  
Accredited

An Integrated Cybersecurity Solution  
for Geolocation, Anti-fraud & KYC

iGaming  
Sportsbook  
iLottery  
DFS  
ADW

GeoComply<sup>®</sup>

# Company Overview

Founded in 2011, GeoComply provides fraud prevention and cybersecurity solutions that detect location fraud and help verify a user's true digital identity. Our award-winning products are based on the technologies developed for the highly regulated and complex U.S. online gaming and sports betting market. Today, we have become the trusted iGaming solution for proven, reliable and accurate geolocation services throughout the world.



## Our solutions are award-winning



9 billion+

analyzed transactions  
per year, and growing

400 million+

installed devices  
worldwide

IP geolocation is the **most common** form of location detection. But using IP as the primary source for location data has many issues...

## Common forms of location spoofing:

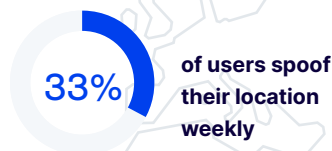
### False Data

Traditional IP geolocation is **inaccurate and unreliable** – especially for mobile connections – and is unable to properly locate users.



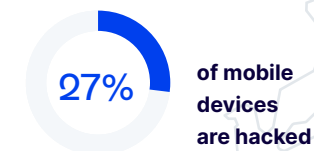
### IP Masking

IP geolocation can easily be masked to **hide a user's true location** using VPNs, proxies, DNS proxies and other anonymizing tools.



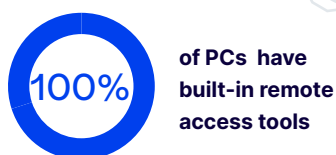
### Device Tampering

This includes attempts such as device rooting, jailbreaking, or code manipulation. **A tampered device can run undetectable location spoofing software.**



### Unauthorized Remote Access

Users can **conceal their true location** by tunneling in from a remote location with remote access tools, such as remote desktop programs and virtual machines.



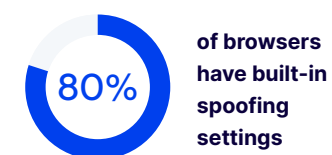
### Spoofing Applications

Turnkey location spoofing tools such as fake location apps, browser extensions or cloaking tools, are readily available online and in mobile app stores.



### Malicious Developer Tools

Due to high demand to develop and test location-dependent products, **developer tools are widely available to manipulate location.** These include mock location settings, emulator/simulator devices, developer modes and browser settings.



# Fighting Fraud Together

Geolocation data isn't just for compliance. This powerful data can help your organization combat fraud. We provide automatic access to information on suspicious activity and fraudulent trends.



## Identify potential fraudsters

Get access to data that identifies suspicious activity like users sharing accounts or using rooted devices. This data is updated hourly.



## Apply fraud tags to accounts

Flag accounts within your organization with a custom fraud tag. Share that information with industry peers to help create an industry-wide fraud database.



## Settle chargeback disputes

With extremely precise timestamps on user activity and their location, our chargeback reports are robust enough to win disputes from banks.



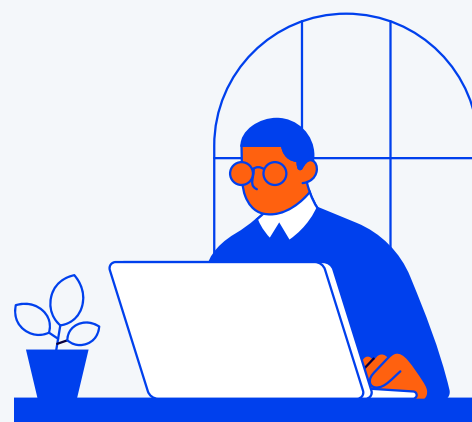
## Block suspicious patrons

Use auto-blocking capabilities to prevent patrons in one or all jurisdictions with a few simple clicks.



## Use AI to fight fraud

With our RiskGuard product running 24/7 behind the scenes, we can spot anomalies in geolocation data patterns.



“

GeoComply cut our payment fraud costs by at least 85%. They gave us access to more detail and data for our ecommerce transactions than we've ever had before. The anti-fraud reports were literally good enough to take to the bank in order to win our chargeback disputes!

Omer Sattar, Co-Founder and EVP, Sightline Payments

# Comply with Geolocation Regulations

A comprehensive, end-to-end solution that helps you fight fraud.



## Comply with complex geolocation requirements.

GeoComply provides the industry's most accurate location detection, by combining multi-source data collection with verification machine learning and human intelligence.



## Spot fraud before it happens.

Empower your business by detecting fraud earlier in customer interactions. Flag suspicious activities like location masking, location jumping and synthetic identity.



## Ensure every bet is from a legitimate user.

Designed to handle high-volume traffic and to ensure the highest level of up-time, GeoComply avoids business disruption. Get the lowest rate of false negatives and false positives by ensuring the most precise inclusion zones for users near the borders.



## Increase digital identity verification rates.

GeoComply offers a multi-vendor waterfall ID and age verification process that provides a seamless user experience.

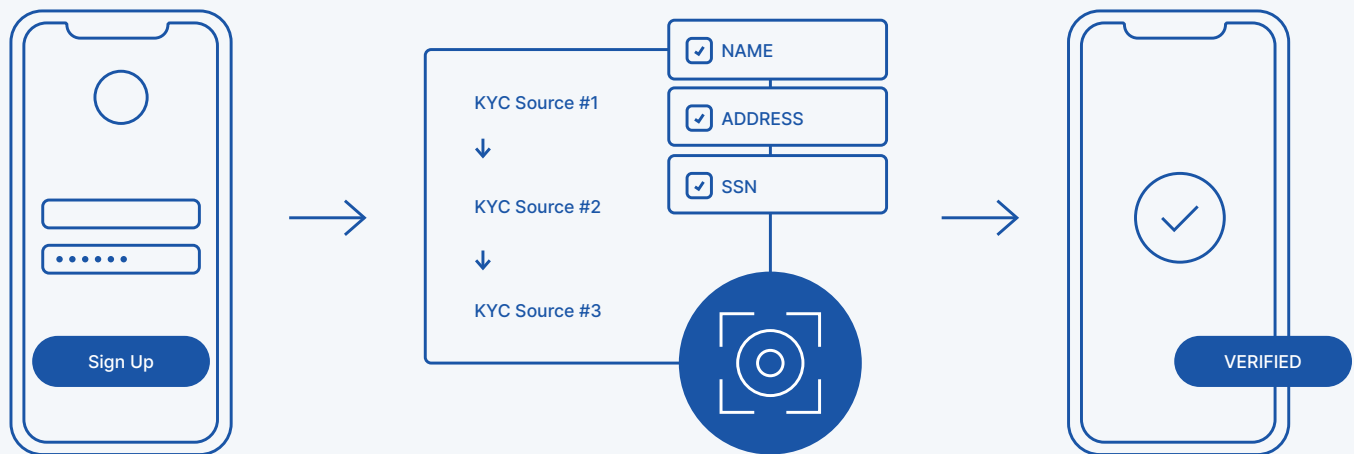


## Provide a seamless player experience.

Location checks happen in milliseconds in the background of a player's session without disrupting their experience.

Get the highest verification rates without the friction and cost – in one award-winning solution.

- ✓ Easy to integrate
- ✓ No integration or licensing fees
- ✓ One single price, multiple verification sources
- ✓ No monthly or annual volume commitment
- ✓ No minimum spend



## Staying on top of KYC can be challenging:

- Continuously changing regulatory requirements
- New technologies and vendors with unique offerings
- Multiple integrations with different vendors to monitor, audit and continuously enhance.
- Multiple contractual obligations.

GeoComply’s compliance-grade solutions enable you to mitigate regulatory risks, reduce fraud, and ensure safe and fair play.

## Delight your customers every step of the way



### Ease customer onboarding

Our team will work with you to apply best UX practices to reduce failure rates within our automated verification processes.



### Simplify digital ID verification

IDComply automatically collects data from photo IDs, which are easily verified with selfies – ideal for “thin-file” customers.



### Protect their privacy

IDComply only stores anonymized applicant data as the GUPI (Global Unique Player Identifier).

## Glean key insights with real-time analytics and compliance tools



### Monitor and improve performance

See the “why” behind your pass rates – and increase them by identifying and fixing problem areas. Our experts and dashboards show you how.



### Lighten your compliance load

Check customers against the most up-to-date KYC requirements, and in multiple jurisdictions.



### Get AML and enhanced due diligence

Safeguard consumer transactions with real-time risk screening – including sanctions and blacklist screenings, and customer profiling features.

## Get customers into the action quicker with hassle-free KYC



### Find more ways to say “yes”

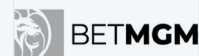
Get the highest possible age and identity verification rates through a waterfall workflow. This process checks multiple vendors and data sources – all through one API call.

### Decrease time to value

Integrate faster with ongoing support from our experts. Get the best KYC data sources and processors from our ever-growing list to verify more customers, sooner. Our partners offer:

- Data verification
- Knowledge-based authentication
- Phone identity verification
- ID photo verification

# Operators and platforms we integrate with, globally



## Contact Us

If you would like to see how our geolocation and anti-fraud solutions can meet your unique needs, please email us at [solutions@GeoComply.com](mailto:solutions@GeoComply.com)